



2023–2024 ANNUAL REPORT

CONTENTS

3 VISION, PURPOSE, VALUES

4 CHAIRPERSON'S REPORT

7 CEO'S REPORT

9 2024 HIGHLIGHTS

13 OUR IMPACT

19 OUR BOARD

20 OUR SUPPORTERS & PARTNERS

21 FINANCIALS

22 TREASURER'S REPORT

Midlas acknowledges the traditional custodians of the land on which we live and work, the Whadjuk Nyoongar people, and pay our respects to elders past and present. We acknowledge the past, walking hand in hand, for a better future.



Midlas recognises, respects and welcomes diversity in all its forms, in the belief that diversity is a source of strength and opportunity.



Featured artwork created by Aboriginal artist Wiló depicting Midlas' community services.

Vision

Social justice and equity
through access to rights and
opportunity

Purpose

Providing advocacy, education,
information, and advice that
empowers people to thrive

Values

Collaboration Excellence
Compassion Inclusion

Context

Midlas provides inclusive,
accessible, holistic, safe, and
culturally appropriate community
and legal services for individuals,
families, and communities.



MESSAGE FROM THE CHAIR



*Jane
Davies*

The 2023-24 financial year marks Midlas' 35th anniversary and proved to be another important year for the organisation.

The Midlas 35th anniversary celebration recognised the contributions of its staff, volunteers, partners and supporters over the decades. We would like to thank the speakers who included Freda Ogilvie with her warm and beautiful Welcome to Country; the Hon. Michelle Roberts MLA, Member for Midland on behalf of the Minister, the Hon. Sabine Winton MLA; and the Hon. Matt Swinbourn MLC on behalf of the Attorney-General, the Hon. John Quigley.

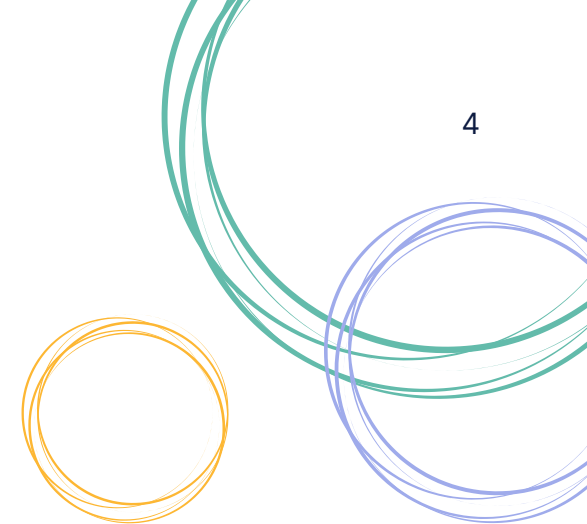
The Hon. Roger Cook MLA, the Premier of Western Australia, provided a video message

and our keynote speaker, Rabia Siddique, gave a moving and powerful presentation that shared her truth and lived experiences. Her message was one of hope and courage, inspiring us all to be the change we want to see in the world.

During this year, the Midlas leadership team and Board built on the successes of the previous year to continue to strengthen our governance, refine our strategic focus, and look forward to future challenges and opportunities. In the last annual report, the Board celebrated the work undertaken with the support of Aha! Consulting, and in consultation with clients, staff and stakeholders, reviewed Midlas' vision, purpose and values to finalise our new

strategic direction. We were thrilled to endorse the Strategic Plan 2024-27 at the 2023 Annual General Meeting and to celebrate its official launch at our 35th anniversary celebration a short time later.

Our Strategic Plan charts the path for how Midlas will, over the next three years, respond to new and existing challenges, pursue new responsibilities, and continue to adapt, grow and transform. The new strategic priorities are underpinned by a commitment to continuous improvement, strong governance, and visionary leadership; each critical to delivering long-term sustainability, growth, and ensuring Midlas' workforce has the skills, engagement, and ongoing support to meet changing





community needs. We are excited about the future and believe this Strategic Plan will assist us to create that future.

This year we saw some changes to the Board with the resignation of long-time Board Director and former Board Chair, Simon Kimber; former Treasurer, Deepak Sharma; and former Secretary, Reg Yarran. We also saw Joseph Hoe step seamlessly into the Treasurer role and were officially joined by new Directors, Angie Perkins and Dwayne Wescombe. We thank our colleagues for their commitment and contributions to Midlas.

We also recognise the efforts of Gaelle Gouillou, who left the CEO position in July 2024 after more than two years in the role. Gaelle has had a significant impact on the organisation, its programs and staff. She has strengthened programs and practices, managed risks, and has, in partnership with Chief Financial Officer, Serge Sasic, established robust financial management practices to restore Midlas' financial stability. Gaelle's efforts have placed Midlas on good footing for the future.

Finally, after an exhaustive recruitment process, we are thrilled to welcome Angie Perkins to the CEO position. Angie is an advocate dedicated to fostering justice and inclusion, with extensive experience engaging with diverse stakeholders to create open and respectful partnerships whilst driving strategic and operational success. Angie has driven change through innovation and evidence-based practice, successfully impacting organisations with vision, purposes and values at the core.

Angie has a unique blend of strategic vision and practical know-how and we are looking forward to her driving the new Midlas Strategic Plan to ensure we are delivering sustainable, effective, and inclusive services to people who have a right to social justice and equity in our communities by providing our clients with the tools needed to build and sustain resilience and self-advocacy skills.

Jane Davies
Acting Chair



midlas
building resilience

35
years

the city diverse places

midlas
building resilience

35
years

Building Resilient Communities

- Family Law
- Restraining Orders
- Consumer Law
- Estate Planning
- Guardianship and Administration
- Criminal Injuries Compensation
- Community Legal Education
- Tenant Advocacy
- Disability Advocacy
- NDIS Appeals
- Financial Counselling
- Financial Capability and Well-being

Community Legal Centres
Australia

Ph: 9250 2123
Email: admin@midlas.org.au
Web: www.midlas.org.au

midlas
building resilience

“ Midlas is not just an organisation; it's a beacon of hope and support for the community it serves, embodying the spirit of compassion and resilience ”
—Midlas staff member

*Honoring the
bravery of 2/3*



MESSAGE FROM THE CEO



*Gaelle
Gonillon*

This past year has been a very busy and successful one for Midlas, marked by its 35th anniversary celebration where we launched the new Strategic Plan for 2024-27 and the beginning of the next stage of our journey as an organisation with the shared aspirations of our collective vision.

The year was filled with many highlights including the introduction of several new initiatives and Midlas continuing to be at the forefront of community empowerment and resilience through the continued expanding of services and programs.

HIGHLIGHTS

- Launched the Strategic Plan 2024-27 charting our course for the next three years.

- Celebrated 35 years supporting communities with a special message from the Premier of Western Australia, the Hon. Roger Cook MLA.
- Our Resilient Futures Elder Abuse Prevention Program was launched by the Hon. Don Punch, Minister for Seniors and Ageing.
- Provided evidence to the Senate Community Affairs Legislation Committee's inquiry into the National Disability Insurance Scheme Amendment Act for 2024.
- Contributed to the Legal Assistance Services Commissioning Strategy and Independent Review of the National Legal Assistance Partnership 2020-25.
- Established a new Ellenbrook office co-located with the Sister Project Community Hub.

- Awarded an Impact100 WA grant and partnered with St John of Good Midland Public and Private Hospital to establish and launch the Midland Health Justice Partnership.
- Successfully met compliance with the National Standards for Disability Services.

Our commitment to delivering support has remained steadfast and we are pleased to see our partnerships and collaborations grow as client needs continue to increase.

We have continued to enhance the quality of our services and develop our organisational structure to increase our capability. In support of these goals, we have committed to improving infrastructure and embedding systems and processes





that support long-term sustainability and growth for the organisation.

Equally important has been our focus on maintaining financial sustainability with responsive leadership and we have worked diligently to achieve these goals for the organisation.

We remained dedicated to advocating for positive change on social issues and through our commitment, we established strong collaboration and delivered better solutions such as the Midland Health Justice Partnership, for some of the most vulnerable individuals seeking our support in an increasingly complex and challenging landscape.

None of this would have been possible without the unwavering support of our incredible team, partners and clients. We especially extend our heartfelt gratitude to all those with lived experience of the issues we advocate for and who have generously and courageously shared their stories and called for change.

Your dedication, trust and contributions have been the driving force behind our achievements and the positive impacts we have made and we sincerely thank each and every one of you for your support.

Our heartfelt thanks to the team who have consistently demonstrated resilience and adaptability in the face of many challenges and impacts affecting those we support. Through their commitment, passion and energy they have risen to meet these challenges, consistently providing compassionate care and support to individuals facing their toughest times. Their dedication, along with the outcomes achieved through their efforts, has contributed to a broader social impact that serves as an inspiration and source of hope for all those we support.

To the executive leadership team, thank you for your dedication, support and stewardship. To the Board of Directors, we are deeply grateful for your ongoing commitment, contributions and support.

Over the past 35 years, we have had many reasons to celebrate and we extend our heartfelt congratulations and gratitude to everyone whose commitment, dedication and vision has shaped the organisation we are so proud to be part of today. As we step into another year, I am filled with hope and optimism for a future where social justice and true equality exists.

Gaelle Guillou
CEO

“

If I win the lottery I'll make a sizeable donation to ensure your services and support continue to be accessible to those in need.

—client feedback

2024 HIGHLIGHTS





MIDLAS TURNS 35

[Click to view the Premier's congratulatory message](#)



On 8 December 2023, Midlas celebrated its 35th anniversary at the Crooked Spire Coffee House in Midland.

For thirty-five years, Midlas has been at the forefront of community empowerment and building resilience. Midlas' commitment to these core values has impacted the lives of thousands of individuals and families who have gone on to thrive.

Guest speakers at the event included the Hon. Michelle Roberts MLA, the Hon. Matthew Swinbourn MLC, and Midlas' deputy

chair Jane Davies. Rabia Siddique, a retired British army officer, hostage survivor, and former terrorism prosecutor, delivered an inspiring keynote address in which she encouraged everyone to be the change they want to see in the world. The Premier of Western Australia, the Hon. Roger Cook MLA, also recorded a special anniversary message which was shown at the event.

The event marked the launch of Midlas' 2024-27 Strategic Plan which presents a refreshed vision and purpose for Midlas. The plan will ensure that Midlas can continue to

meet evolving community needs well into the future.

Midlas' staff, volunteers and supporters, both past and present, were commended for their contributions over the years. Midlas extended its gratitude to Heather McBurney, who announced her retirement after a decade of service as Midlas' Senior Financial Counsellor.

Midlas' milestone celebration was a testament to the commitment, dedication, and vision that have transformed Midlas into a pillar of the community.



RESILIENT FUTURES PROGRAM

In July 2023, Midlas launched its Resilient Futures program to assist with the prevention of elder abuse. It is estimated that one in six older Australians will experience some form of elder abuse, making this a much-needed service in the community.

Midlas' Resilient Futures Program is designed to combat financial abuse, the most pervasive form of abuse against older Australians, which comprises 34.2% of all abuse cases. The program achieves this by assisting older Australians with their estate planning needs, namely:

- Drafting Wills, to ensure that peoples' estates are administered in accordance with their preferences; and
- Drafting Enduring Powers of Attorney and Enduring Powers of Guardianship, to ensure that peoples' dignity is protected if they become unable to effectively communicate their wishes.

Where appropriate, the service also provides an avenue for carers to make applications for guardianship and administration in the State Administrative Tribunal.

Midlas provides a holistic service to older Australians. When older Australians engage the Resilient Futures team to draft their estate planning documents, they may then be referred to the Financial Counselling team. The Financial Counselling team will in turn ensure that the client is accessing all the concessions and benefits to which they are entitled.

“

I am very grateful to Haylee and Doris, who have drafted a very good Will for me. I will be glad to recommend their service to my friends who need their help.

—client feedback





HEALTH JUSTICE PARTNERSHIP LAUNCH



In May 2024 – Domestic and Family Violence Prevention Month – Midlas launched its Midland Health Justice Partnership with St John of God Midland Public and Private Hospitals (SJGMPPH).

Supported by an Impact100 WA grant, the health justice partnership is a ground-breaking initiative and early intervention response to the escalating family and domestic violence crisis in Western Australia.

The official launch of the partnership was held at SJGMPPH and commenced with a

beautiful Welcome to Country delivered by Robyn Collard.

The event featured speakers including the Hon. Simon Millman MLA, representing the Minister for Health, the Minister for Prevention of Family and Domestic Violence, and the Attorney-General; the CEO of Midlas, Gaele Gouillou; and the CEO of SJGMPPH, Paul Dyer.

The partnership provides:

- An early intervention and prevention response to the FDV crisis in WA.

- An innovative, evidence-based service model which prioritises the safety of our community's most vulnerable members.
- On-site legal support for patients prior to discharge.
- Specialised staff offering immediate support with legal issues in partnership with clinical and allied health professionals.
- Support that complements family and domestic violence screening by clinicians with early intervention and prevention measures.

OUR IMPACT



LEGAL

- Family law matters
- Family violence matters
- Midland Magistrates' Court Duty Lawyer Service
- Criminal Injuries Compensation claims
- Estate Planning matters
- Guardianship and Administration applications

FINANCIAL

- Budgeting information and advice
- Options for dealing with debt
- Complaints to AFCA
- Work Development Permit Scheme
- Education and training to boost financial capability

DISABILITY

- Provision of information and support to people with disabilities, their carers and families
- Referrals to community organisations/supports
- Assistance with NDIS Appeals

OUR PROGRAMS

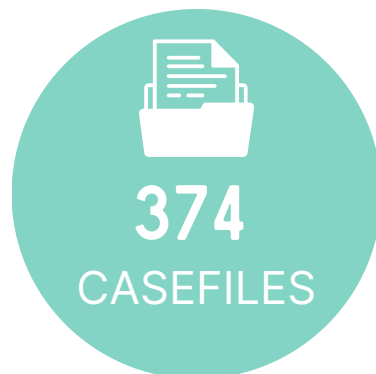
TENANCY

- Information on tenants' legal rights
- Negotiation, conciliation and advocacy with property agents, owners, and the Department of Communities
- Representation at Midland Magistrates' Court
- Assistance with bond disputes and evictions





LEGAL SERVICES



“
The staff were
amazing, respectful,
professional and much
appreciated.
—client feedback

HEALTH JUSTICE PARTNERSHIP*



* First 6 months

RESILIENT FUTURES

† Enduring Power of
Attorney
†† Enduring Power of
Guardianship



MOST COMMON PRESENTING ISSUES

- 1 PROPERTY IN A MARRIAGE
- 2 FAMILY/DOMESTIC VIOLENCE ORDER
- 3 CHILD CONTACTS/CONTACTS ORDERS
- 4 DIVORCE
- 5 PROPERTY DE FACTO



TENANCY ADVOCACY



277
ADVICES



231
CASEFILES

MOST COMMON PRESENTING ISSUES

1 GENERAL RIGHTS/RESPONSIBILITIES

2 TENANCY AGREEMENT

3 FEES & OTHER CHARGES

4 RENT

5 REPAIRS



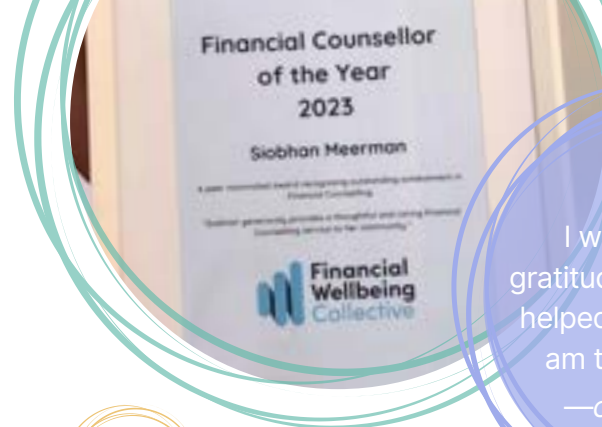
“

Taryn assisted me. I felt heard, and I have great respect and gratitude for her professionalism and her fantastic advocacy skills.

—client feedback



FINANCIAL SUPPORT COACHING & CAPABILITY



“
I want to pass my
gratitude to Siobhan, who
helped me to be where I
am today financially.
—client feedback



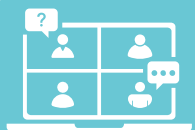
COUNSELLING





DISABILITY ADVOCACY

NDIS APPEALS



12,074
SESSIONS



133
CLIENTS



58
CASEFILES



36
ADVICE ONLY



INDIVIDUAL ADVOCACY



156
CASEFILES



20
ADVICE ONLY





OUR BOARD



JANE DAVIES
ACTING CHAIR

Jane is a marketing and commercial leader with over 25 years' experience in the commercial, not-for-profit and government sectors.



DWAYNE WESCOMBE
SECRETARY

A proven senior leader and director with extensive leadership and industry experience gained across a diverse range of sectors.



JOSEPH HOE
TREASURER

Joseph is a senior Financial Adviser with Wealthwise. He is also a Fellow Certified Practising Accountant (FCPA), a member of CPA (Australia), a SMSF Specialist from the SMSF Association, and a certified financial planner.



MERISSA VAN DER LINDEN
DIRECTOR

Merissa has over 20 years' experience in human services including hands-on, leadership and governance roles within the not-for-profit sector.



ANGIE PERKINS
DIRECTOR

Angie has more than 20 years' experience in the not-for-profit and government sectors and has worked in areas focusing on mental health and family domestic violence.



REG YARRAN
DIRECTOR

Reg is an experienced adviser with a demonstrated history of working in the environmental services industry.



OUR SUPPORTERS & PARTNERS



Government of Western Australia
Department of Justice



Government of Western Australia
Department of Communities



Community Legal Centres
Australia



Australian Government
Department of Social Services



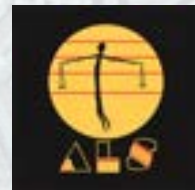
Impact100
western australia



SISTER
PROJECT



Government of Western Australia
Department of Mines, Industry Regulation
and Safety



Swan Communities
for Children

DELIVERED BY ngala

Communities for Children is funded by the Department of Social Services

JOHNSON
WINTER
SLATTERY



Government of Western Australia
Department of the Premier and Cabinet



Public Purposes Trust Fund

FINANCIALS





MESSAGE FROM THE TREASURER



*Joseph
Hoe*

2024 has been an impactful year for Midlas. Over the last 12 months, Midlas' financial position has improved reasonably well, taking into account domestic economic uncertainties and challenging operating environments.

Over the course of the year, Midlas has been able to maintain effective performance while also delivering an overall surplus. As a result of continued focus, prudent management and budgetary control, Midlas has reported a surplus of \$44,945 for the financial year. This will set us up on a good trajectory towards the next phase of sustainable growth.

Midlas recorded revenue of approximately \$3.2 million for the financial year, its highest to date and a 3.1% increase from FY 2023.

This can be attributed to an increase in grant contributions as well as effective utilisation of previously unspent grant funds that have been brought forward.

Our total equity has strengthened by approximately 5.4% over the last 12 months due to the concentrated efforts of Midlas' staff.

Our overall working capital position improved by 12%, which was realised primarily through a reduction in deferred income/unspent grants liability. Our strong Balance Sheet and financial position will ensure that Midlas has sufficient funds to meet its liabilities as and when they fall due.

The 2024 financial statements have been audited by Crunch Auditing and an unqualified audit opinion was issued. The financial statements are in the process of being uploaded to the ACNC website.

I would like to take this opportunity, on behalf of the Board of Directors, to recognise and commend the efforts of Midlas' management team, as well as all of Midlas' staff, for their outstanding commitment, passion, and contribution to the delivery of Midlas' services to the community.

Joseph Hoe
Treasurer

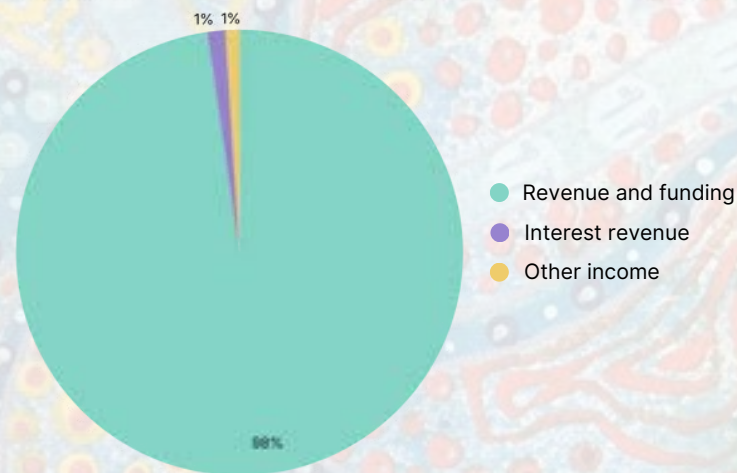
STATEMENT OF FINANCIAL POSITION

FOR THE FINANCIAL YEAR ENDED 30 JUNE 2024

	2024 \$	2023 \$
ASSETS		
CURRENT ASSETS		
Cash & cash equivalents	1,264,517	1,585,822
Other receivables	19,569	12,267
Prepayments	23,642	28,536
TOTAL CURRENT ASSETS	1,307,728	1,626,625
NON-CURRENT ASSETS		
Property, plant & equipment	11,073	52,181
Right of use assets	85,805	86,069
TOTAL NON-CURRENT ASSETS	96,878	138,250
TOTAL ASSETS	1,404,606	1,764,875
LIABILITIES		
CURRENT LIABILITIES		
Provisions	184,890	147,570
Deferred income	90,440	526,645
Lease liabilities	75,239	72,639
Trade & other payables	153,558	163,170
TOTAL CURRENT LIABILITIES	504,127	910,024
NON-CURRENT LIABILITIES		
Provisions	—	—
Lease liabilities	19,766	19,083
TOTAL NON-CURRENT LIABILITIES	19,766	19,083
TOTAL LIABILITIES	523,893	929,107
NET ASSETS	880,713	835,768
EQUITY		
Retained surpluses	880,713	835,768
TOTAL EQUITY	880,713	835,768

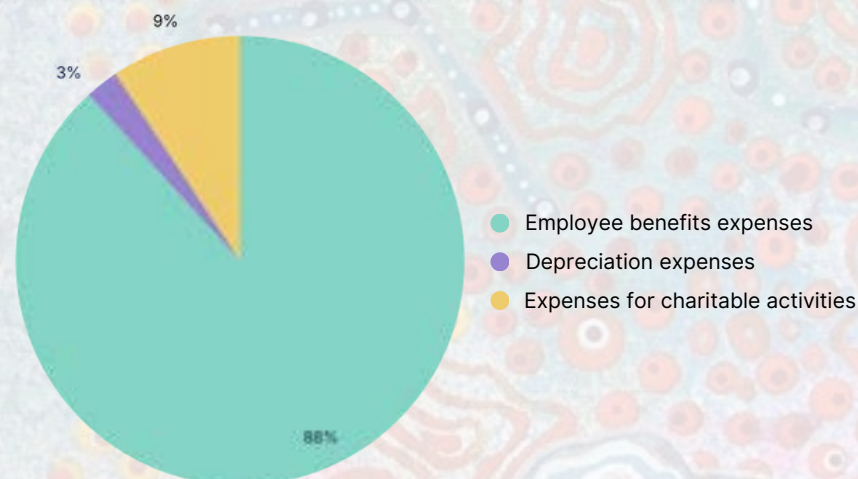
FY 2024 INCOME

	2024	2023
Revenue and funding	\$3,163,160	\$3,062,073
Interest revenue	\$41,519	\$10,027
Other income	\$32,989	\$38,361
TOTAL INCOME	\$3,237,668	\$3,110,461



FY 2024 EXPENSES

	2024	2023
Employee benefits expenses	\$2,816,799	\$2,691,480
Depreciation expenses	\$76,442	\$76,522
Expenses for charitable activities	\$299,482	\$331,353
TOTAL EXPENSES	\$3,192,723	\$3,099,355





Midland Information, Debt and Legal Advocacy Service Inc (MIDLAS)
ABN 63 193 638 422
12 Old Great Northern Highway, Midland WA 6056 (corner of The Avenue)
08 9250 2123
admin@midlas.org.au

